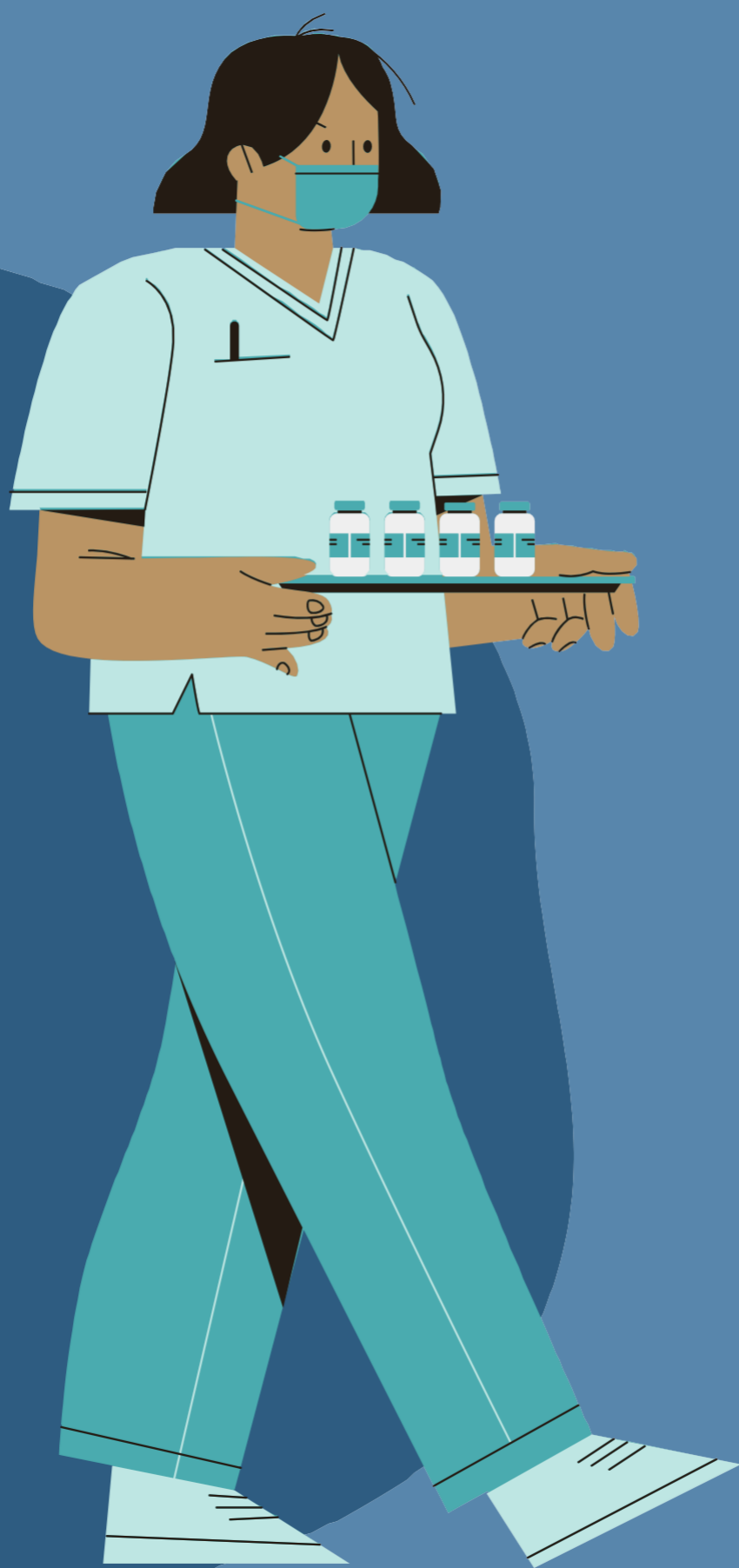


# Jamirooje paytude e rafi kovid 17 Jolal (Noowamburu) 2021



1

Suumaade (wadde maske) ina waddii e mo woni kala, gondo e nokku kidiido, jahroowo e duubi sappo (10). So ko noon e janngirde (lekkon) fuddii ko e yahroobe duubi sappo e d'idi(12).

2

Kala nokku, do ina joggi hollirde seedantaagal ñakku (CST), doon, wadde mask-mum ko ko waddii. Yeru, nokku gamirde jamma guddaado. Gardo heen fof ina waawi hollirde jarriima hoyre mum walla jarribaama e ñalawma oon, ngam dadii e rafi kovid so yidii dadde e cuumagol

3

Tuggude e 17/11/2021, gollorgal-ayaawo waddiima e mo woni kala, balde naye e yontere haa ñalnde 12/12/2021. Balde tati e yontere, tuggande-ma e 13/12/ 2021, so wonaa noon tawa ko mbaydi golle dee calii, walla, so wadiraama noon, golle fof mbonat, ndartoo.

4

Daawal tatabal ñakku ina hebori yamireede ko leelaani. Woobube be duubi joyi haa sappo e joyi (5-11), ñakku mum en ina fuddoo ko leelaani, e sardi pawido e yamiroore diisnondiral toowngal dewindiingal celle balli

5

Se recomienda encarecidamente Ina wasiyaa noon no feewi, wajjondirde, woorondirde e wofondirde, wonnade kala be njiydaa taariindi, be njiydaa keeriindi.

So on njidii laabtindaade, njokkee humpito e ngal do jomngal  
<https://www.info-coronavirus.be/fr/>  
0800 14 689

NDEENEE KOYE MON, NDEENON WODBE

